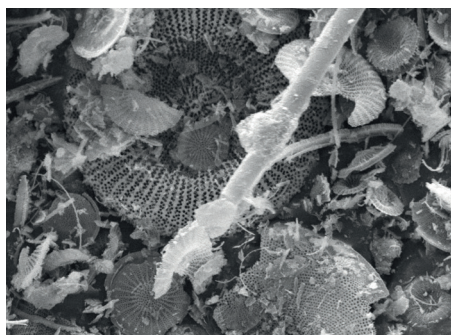


RELIABLE FILTRATION



HOBRA Kieselgur

FILTER AIDS

HOBRA ŠKOLNÍK

FILTER MEDIA
FILTER EQUIPMENT AND TECHNOLOGY



HOBRA Kieselgur – Filter aids

Characteristics

HOBRA Kieselgur is a diatomaceous earth produced from shells of dead tertiary diatoms. It is suitable for all types of globally used pre-coating filters. We offer a complete series of high-quality diatomaceous earth from coarse grades HOBRA 700, 600 and 500, suitable for basic pre-coating, through fine coarse grade HOBRA 250, up to very fine diatomaceous earth grade HOBRA 150, 100 and 40. The proper use of HOBRA Kieselgur ensures high filtrate purity. HOBRA Kieselgur meets all quality standards and is suitable for the use in Food & Beverage industry.

Grades and technical specifications

	H040	H100	H150	H250	H500	H600	H700
Filtration Velocity (l/min.m ²)	10–30	60–100	50–80	150–350	450–550	550–650	650–750
Permeability (Darcy)	0,012–0,030	0,080–0,150	0,065–0,100	0,20–0,45	0,50–0,70	0,50–0,85	0,80–1,20
Bulk Density (kg/m ³)	max. 250	max. 210	max. 250	max. 250	max. 300	max. 300	max. 300
Wet Density (kg/m ³)	max. 650	max. 500	max. 500	max. 500	max. 500	max. 500	max. 500
Water Leach (pH)	6–8	7–9	7–9	7–9	7–9	7–9	7–9
Technological Humidity (%)	max. 6	max. 1	max. 1	max. 1	max. 1	max. 1	max. 1
Smell	–	–	–	–	–	–	–
Taste	–	–	–	–	–	–	–
Colour	light grey	beige	beige	beige	beige	beige	beige
Granularity – Residue on Sieve							
0,250 mm	max. 0	max. 0	max. 0	max. 0	max. 0	max. 0	max. 0
0,045 mm	max. 1	max. 0,02	max. 3	max. 3	max. 15	max. 15	max. 15
Chemical Analysis							
SiO ₂	min. 78	min. 80	min. 78	min. 78	min. 78	min. 78	min. 78
Al ₂ O ₃	max. 13	max. 13	max. 13	max. 13	max. 13	max. 13	max. 13
Fe ₂ O ₃	max. 1,5	max. 1,5	max. 1,5	max. 1,5	max. 1,5	max. 1,5	max. 1,5
LOI (%)	max. 7	max. 0,5	max. 0,5	max. 0,5	max. 0,5	max. 0,5	max. 0,5
Pollutant Content	COMPENDIUM of FOOD ADDITIVE SPECIFICATIONS VOLUME 1 (ROME)						
As (mg/kg)	< 10,0	< 10,0	< 10,0	< 10,0	< 10,0	< 10,0	< 10,0
Pb (mg/kg)	< 10,0	< 10,0	< 10,0	< 10,0	< 10,0	< 10,0	< 10,0
Other heavy metals (mg/kg)	< 50,0	< 50,0	< 50,0	< 50,0	< 50,0	< 50,0	< 50,0
Extraction	MEBAK 1.1.2.6.1						
Al (mg/kg)	max. 120	max. 250	max. 280	max. 250	max. 150	max. 150	max. 150
Pb (mg/kg)	max. 1000	max. 35	max. 180	max. 40	max. 100	max. 100	max. 100
Fe (mg/kg)	max. 50	max. 80	max. 80	max. 80	max. 50	max. 50	max. 50

Packaging

H040, H150, H250	15 kg / Sack	675 kg / pallet 120 x 80 cm
H100	15 kg / Sack	630 kg / pallet 120 x 80 cm
H500, H600, H700	20 kg / Sack	720 kg / pallet 120 x 80 cm